

**South Sound Chapter (SSC) Washington Native Plant Society  
January 2022, Monthly Update**

**Editor:** Gail Trotter [newsletterediting@southsoundchapterwnps.org](mailto:newsletterediting@southsoundchapterwnps.org)

**WNPS Mission**

To promote the appreciation and conservation of Washington's native plants and their habitats through study, education and advocacy.

***What's Happening Highlights***

**January Webinar Program - Tacoma Tree Foundation: Growing Tree Equity Community Resiliency in Tacoma's Urban Forest**

**January Hike -Manchester State Park**

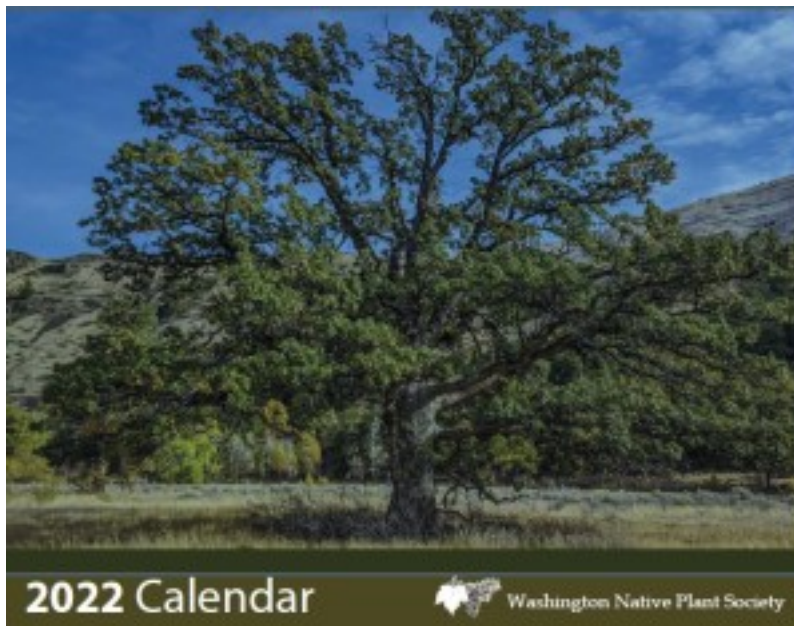
**PNW and SSC News**

**Volunteer Opportunities**

**WNPS Calendar of Events**      <https://www.wnps.org/events>

**Partner Calendar** <https://www.wnps.org/partner-calendar>

**The WNPS 2022 Calendar is on sale**



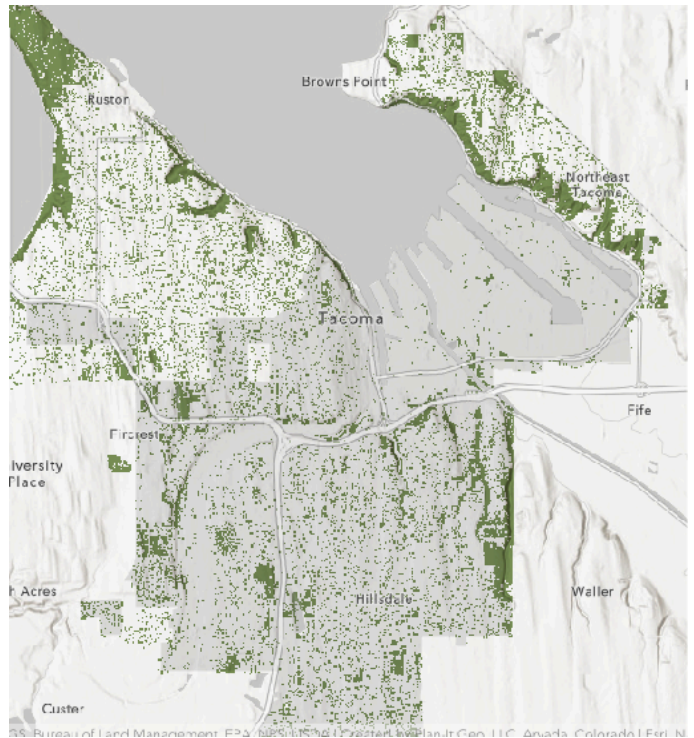
Calendar sales are available in the WNPS online store <https://www.wnps.org/store/wnps-2022-calendar> This calendar will be sold for \$12.00 online plus shipping. \$3.00 of each member purchase will go to the primary chapter of the member. Thank you for supporting this fall/winter fundraiser that benefits WNPS and the South Sound Chapter as well.

**Celebrate the New Year with a New Calendar**

**January Virtual Program** - Please preregister and email a notice to your friends.

**Tacoma Tree Foundation: Growing Tree Equity and Community Resiliency in Tacoma's Urban Forest**  
by Lowell Wyse & Jess Stone

Once considered the "Lumber Capital of the World," Tacoma now has the lowest tree canopy coverage of any city in Western Washington. Tacoma Tree Foundation (TTF) is working to change that! Looking at the latest data on tree coverage, racial and economic diversity, and summer "heat islands," TTF is a nonprofit organization focused on connecting people with trees in the areas they are needed the most. Join us for a presentation by Lowell Wyse, Executive Director, and Jess Stone, Board President. This talk will cover the relatively new concept of "tree equity" and what that means for the future of Tacoma and the South Sound.



**Date: Wed, January 12**

**Time: 6:30 PM**

**Pre-Registration on:** [https://us06web.zoom.us/webinar/register/WN\\_viceSNsESUq6Q2D8ab1BQg](https://us06web.zoom.us/webinar/register/WN_viceSNsESUq6Q2D8ab1BQg)

**Lowell Wyse Bio:**

An English professor turned urban forest advocate, Lowell Wyse, Ph.D., is the executive director of the Tacoma Tree Foundation. For over a decade, he taught college writing, literature, and environmental humanities, focusing on the many ways that social and environmental issues overlap. His scholarship resulted in the book *Ecospatiality: A Place-Based Approach to American Literature*, published in 2021. In 2016, he founded a community group called Tacoma Needs Trees, to call attention to the urban forest crisis in Tacoma, where tree coverage is the lowest of any city in Western Washington. Lowell's love of place is informed by his family farm in Michigan, the Kansas plains, the Colorado mountains, the Hopi high desert, Chicago's Rogers Park, and the Pacific coast of Lima, Peru. He now lives in downtown Tacoma.

**Jess Stone Bio**

An ISA Certified Arborist with a Master of Forestry Science degree, Jess Stone is the Board President of Tacoma Tree Foundation. A Natural Lands Steward for Pierce County Parks and a US Army veteran, She is experienced in critical area permitting, habitat restoration, and urban forestry. You'll find her going door to door advocating for environmental issues, leading volunteers in habitat restoration, or just sitting on her back porch with a cabernet watching the deer prune her tomato plants.

**View Past Programs:** <https://www.wnps.org/wnps-annual-events/virtual-events>

## January Hike

**Date:** Sunday, January 23, 2022

**Location:** Manchester State Park, 7767 E Hilldale Rd,  
Port Orchard

**Hike Leader:** Cyndy Dillon

**Contact**

**Information:** fieldtrips@southsoundchapterwnps.org  
253 225-9284 (text or call)

**Departure Time:** 10am

**Estimated Return Time:** 12pm

**Departure location:** parking lot near torpedo warehouse

**Number of people:** 10 per group

**Hike Description:** Set on the shore of Rich Passage, Manchester State Park includes 2 miles of hiking trails and 3,400 feet of saltwater shoreline, with a view of Bainbridge Island. The park is known for the large brick structure that was once a torpedo (underwater mines) warehouse. We will identify native plants (some only by observing winter twigs) in the big leaf maple and Douglas fir forest and observe the mosses and lichens that flourish in the winter.

**Special requirements:** For Covid 19 safety, hikers must pre-register with Cyndy Dillon, who will send a link to a mandatory liability waiver when you provide your email address. When registering for and again on the day-of the hike, the participant should answer "no" to the following questions:

- Do you currently have any symptoms of COVID-19 as outlined by the CDC, or have you had symptoms in the past 14 days?
- According to the CDC, do you have any reason you should quarantine?

Participants who answer yes to either question may not participate in a WNPS activity.

For the hikes you will need to bring the liability waiver, mask, hand sanitizer and any water. Dress for the weather and wear good hiking shoes. **Washington Discover Pass required.**

**Directions:** From WA-16, take the exit toward WA-160 E/Sedgwick Rd/Southworth Ferry. Turn right onto SE Sedgwick Rd (WA-160 E) toward Southworth Ferry. Turn left onto Jackson Ave SE. Turn right onto Mile Hill Dr. Turn left onto Colchester Dr E toward Manchester. Turn left on E. Main St, then right onto Beach Dr E. Turn right onto E Hilldale Rd to park entrance. Follow brown signs to park from WA-16.

## Communicating Science

A Collaboration of Book Artists and Scientists is an exhibition running till January 14th, 2022 at Collins Library on the University of Puget Sound Campus. Monday - Friday, 8:00 am to 5:00 pm. Visit the [website](#) to learn more.



## SSC News

**South Sound Chapter – Election Results for 2022** - Thank you Lee Fellenberg for counting the votes.

TOTAL NUMBER OF BALLOTS SENT: 246

TOTAL NUMBER OF BALLOTS RETURNED: 34

Final tally of votes from South Sound Chapter – Washington Native Plant Society election:

Chair Deb Naslund	34
Vice Chair Annette Kruzic	33
Vice Chair Kevin Head	33
Secretary Kurt Reidinger	34
Treasurer Rita Hummel	33

## PNW Events & News

### [A GUIDE TO WASHINGTON STATE'S URBAN TREE CANOPY](#)

### [The Top 10 invaders in Washington: Wild pigs, monster fish, killer flowers and more](#)

#### **Satsop and Wynoochee Aquatic Species Restoration Projects**

Noon Tuesday January 25th Montesano Library at 125 Main Street S

**Description** Did you notice the river restoration construction projects happening on the Satsop and Wynoochee Rivers this past summer? Anthony Waldrop of the Grays Harbor Conservation District will discuss the why, what, and how related to this exciting work.

#### **SSC & Partner Volunteer Opportunities**

**Missing the SSC library exchange?** Consider Becoming a Volunteer Shipper with [Operation Paperback](#) and supporting an underserved part of our community.

**Olympia Native Plant Garden Work Party** : Jan 20, 11am Please contact Gail Trotter if you will participate. [volunteers@southsoundchapterwnps.org](mailto:volunteers@southsoundchapterwnps.org)

**South Sound Prairies Restoration**: For details contact Angela Winter at [awinter@cnlm.org](mailto:awinter@cnlm.org)

**China Lake Work Party**: <https://www.metroparkstacoma.org/event/china-lake-volunteer-work-party/>

**Tacoma Nature Center Work Party**: <https://www.metroparkstacoma.org/event/tnc-work-party-2-5-21/>



By Deb Naslund

Volunteer Spotlight:  
South Sound Chapter  
Board of Directors

We had a successful election of officers to the South Sound Chapter Board of Directors for 2022. I will remain as Chair for another year. I am happy to welcome Annette Kruzic as our new Vice-Chair – Pierce County. And am grateful to Kevin Head, remaining as Vice-Chair – Thurston County, Kurt Reidinger, remaining as Secretary and Rita Hummel remaining as Treasurer.

We have a number of other changes to the Board that I am pleased to announce:

Gail Sklar has agreed to be our Education Committee Chair. Her decades of experience in education make her a perfect fit for this position.

Walter Fertig is joining us as Chapter Botanist. Walter is the Rare Plant Botanist for WA Department of Natural Resources' Natural Heritage Program. He is also Editorial Chair for *Douglasia*. He brings a wealth of knowledge and experience to the role of Chapter Botanist.

Lee Fellenberg is stepping down as Chapter Web Manager. He will continue distributing email and snail mail messages to South Sound Chapter members. The new email address that Lee will be using to distribute email newsletters, hike descriptions, and general announcements is:  
[chapter\\_mail\\_room@southsoundchapterwnps.org](mailto:chapter_mail_room@southsoundchapterwnps.org).

Wendy Buffett is our new Chapter Web Manager. She has extensive experience using web software and publishing web pages. Keep an eye on our web pages as we transition from [www.southsoundchapterwnps.org](http://www.southsoundchapterwnps.org) to [www.wnps.org/south-sound](http://www.wnps.org/south-sound).

The other members of the SSC Board are:

Bill Brookreson: Stewardship Committee Chair; Director-at-Large

Peggy Butler: Grant Committee Chair

Cyndy Dillon: Field Trip Coordinator

Penny Douglas: Conservation Chair

Regina Johnson: Director-at-Large

Jane Ostericher: Publicity Chair

Gail Trotter: Immediate Past Board Chair; Editorial Chair; Volunteer Chair; and Presentations Coordinator.

A huge "Thank-you" to everyone on our Board for their continuing dedication and service to WNPS and the South Sound Chapter. They are the key to our success.

I'm looking forward to a fabulous 2022 with this dynamic team!

### **Message from our Chapter Chair:**

It's a new year and we welcome all the opportunities that are before us in 2022. I have high hopes for an active and productive year.

The pandemic will undoubtedly continue to be a challenge, but we will find our way forward through those challenges. The 2021 – 2022 South Sound Chapter meeting schedule continues with Zoom presentations on Wednesday, January 12; Monday, February 14; Wednesday, March 9; Monday, April 11; and Wednesday, May 11. Mark your calendars - especially your WNPS 2022 calendar!

At the local level, we continue to host Volunteer Restoration Projects and Native Plant Hikes. You can find more information for all of these elsewhere in this publication.

April is Native Plant Appreciation Month (NPAM). Gail Sklar, the NPAM Committee, WNPS Office staff, and Chapter volunteers are planning a month filled with webinars, hikes, and workshops celebrating our native flora.

As part of NPAM, the South Sound Chapter will hold our Spring Native Plant Sale. We are launching a new format for the sale. We will take on-line orders in early April. Customers will pick up their orders on April 22 and 23. Stay tuned for more information about the sale coming soon.

At the state level, several events are in the planning stages, including:

The Washington Botanical Symposium, co-hosted by the University of Washington Botanic Gardens and the University of Washington Herbarium, and sponsored by WNPS, is scheduled for March 2<sup>nd</sup>. For more information, see <https://botanicgardens.uw.edu/education/adults/conferences-symposia/wa-botanical-symposium/>

WNPS will hold the 45<sup>th</sup> Annual Dinner and Awards Ceremony on March 19<sup>th</sup>. Bill Brookreson, among others, will be honored as a WNPS Fellow at this event.

We will welcome back both WNPS Study Weekend in April and Botany Washington in May. More details will be coming soon for both events.

There are many other outstanding opportunities to participate in webinars, hikes, and workshops. Check the WNPS calendar for the latest information: <https://www.wnps.org/calendar>

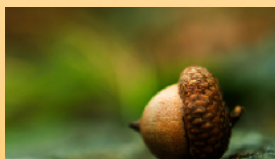
WNPS Executive Committee has released new COVID-19 guidelines for in-person meetings and field trips in 2022. I will be working with the South Sound Chapter Board to determine how we will move forward with this new direction. Stay tuned!

At this beginning of the new year, let us take a moment to reflect on the mission of WNPS: “To promote the appreciation and conservation of Washington's native plants and their habitats through study, education, and advocacy.” What can you do this year to advance this worthy cause? Every action we take, however large or small, can have significant, positive outcomes for our native flora, our local environment, and our world. Here’s hoping that 2022 offers you many opportunities to further the work of WNPS.

Margaret Mead said, “Never doubt that a small group of thoughtful, committed citizens can make a difference in the world. Indeed, it is the only thing that ever has.” We are all citizens of the earth and I hope you will join us in making a difference in the natural world around us.

Deb Naslund (She/her)

South Sound Chapter Chair [chair@southsoundchapterwnps.org](mailto:chair@southsoundchapterwnps.org)



The South Sound Chapter is within the lands of the Coast Salish people and we are grateful to them for their past and on-going natural resource management and native plant stewardship.